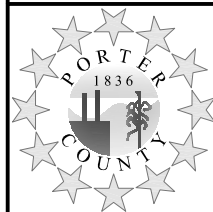
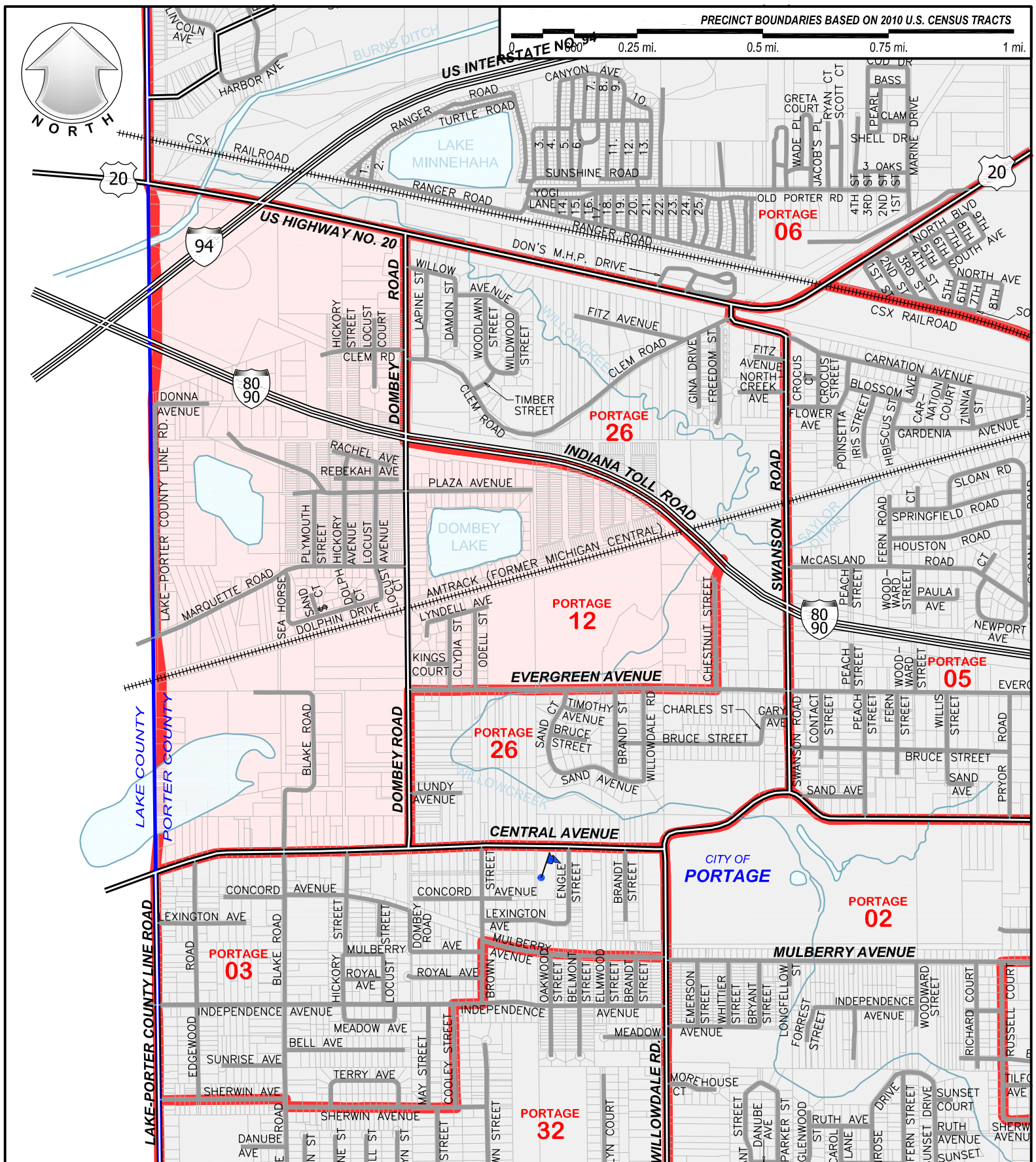




PRECINCT BOUNDARIES BASED ON 2010 U.S. CENSUS TRACTS

0 0.25 mi. 0.5 mi. 0.75 mi. 1 mi.



**PORTER COUNTY SURVEYOR'S OFFICE**  
 KEVIN D. BREITZKE, P.E., L.S. - COUNTY SURVEYOR

155 INDIANA AVENUE SUITE 303  
 VALPARAISO, INDIANA 46383

PHONE (219) 465-3560 FAX (219) 465-3811

### PORTAGE TOWNSHIP PRECINCT NO. 12

Poll location: Portage Adult Education Building  
 5391 Central Avenue

Date: 01-01-2012  
 Scale: 1:1320'  
 Quarter Section No. N/A

Precinct lines (red) are based on 2010 US Census Data provided by the Indiana Election Division and county election officials.